

Released under the CC Attribution Share-Alike 3.0 License

<http://creativecommons.org/licenses/by-sa/3.0/>

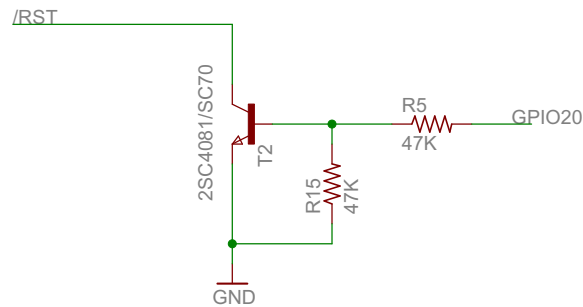
Sensor Interface

MODEL: M32W.v1.0

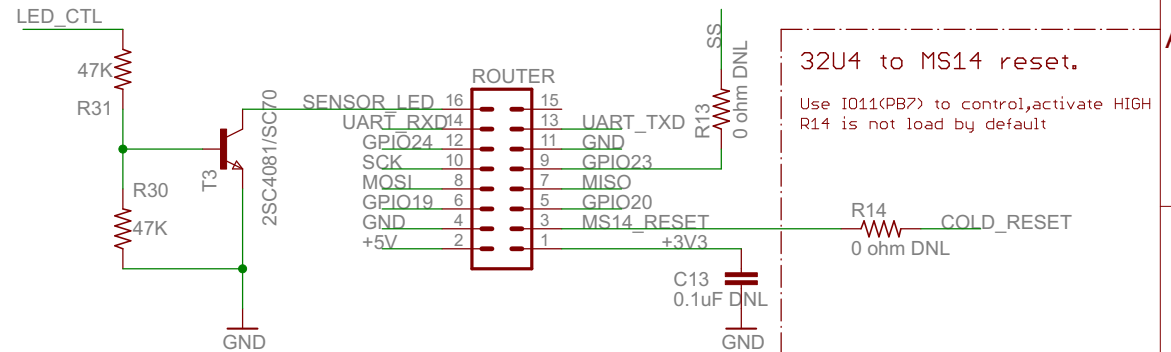
2014/4/17 0:11:02

Sheet: 1/3

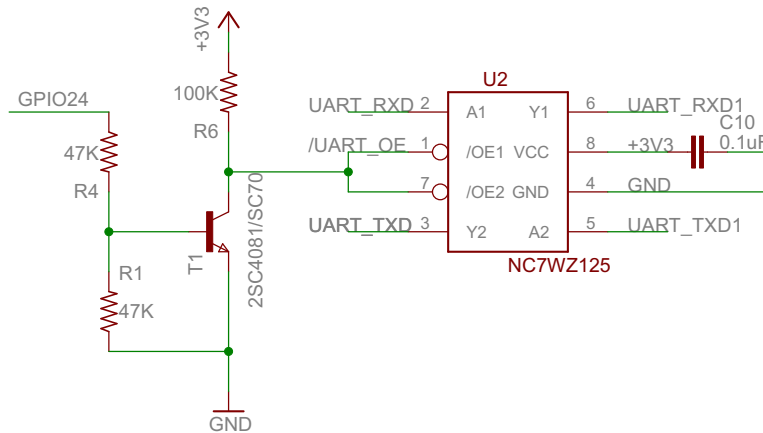
## MS14 GPIO20 to 32u4 Reset



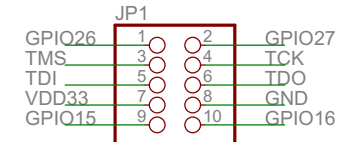
## Connector to MS14 - SPI, UART



## UART 3 state buffer between MS14 and 32U4 GPIO24 to enable /disable. activate HIGH

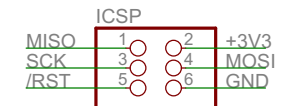
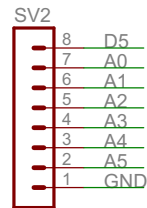
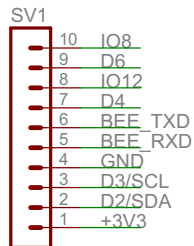


## Connector to ms14



Caution: The ICSP is connected to both 32u4 and ar9331, don't use 5v signal on it.

## Breakout pins from 32u4



Released under the CC Attribution Share-Alike 3.0 License

<http://creativecommons.org/licenses/by-sa/3.0/>

Interface to Dragino2

MODEL: M32W.v1.0

2014/4/17 0:11:02

Sheet: 2/3

## BEE Footprint

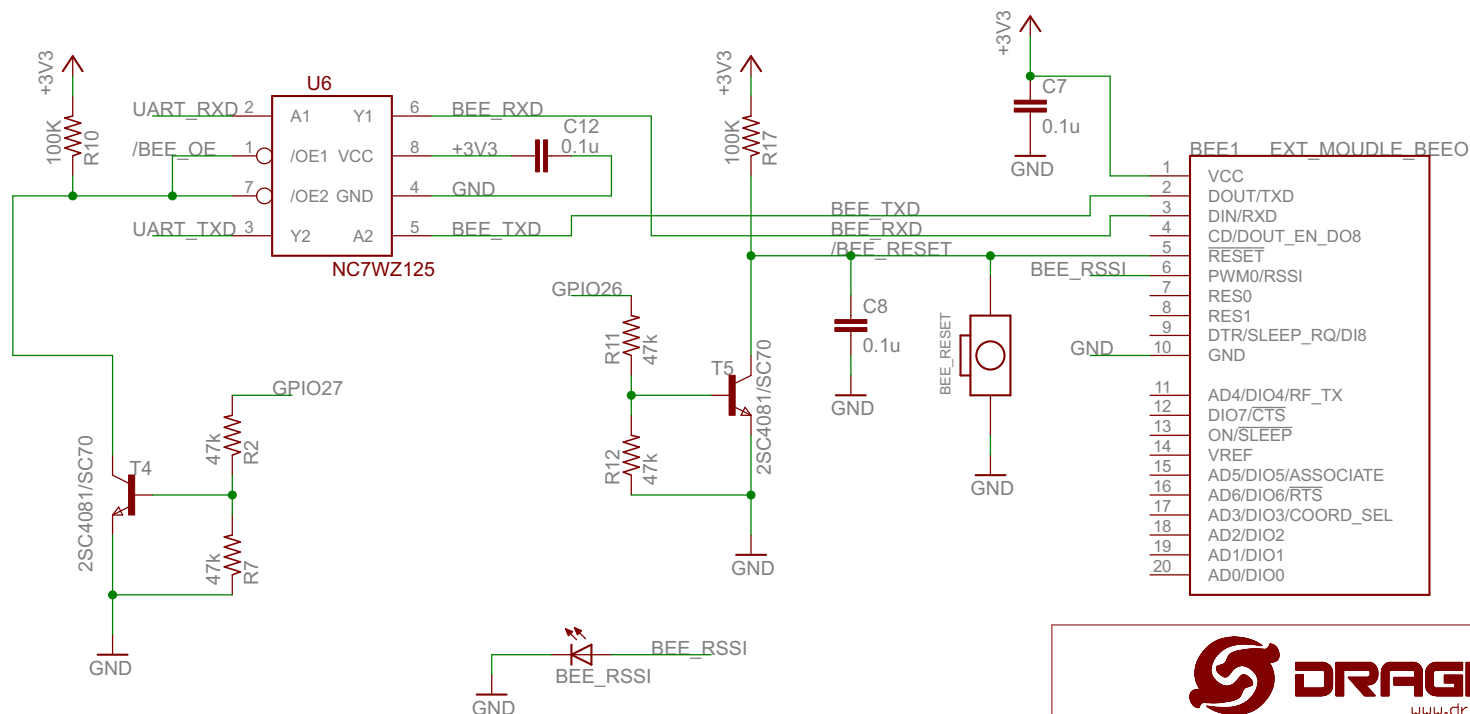
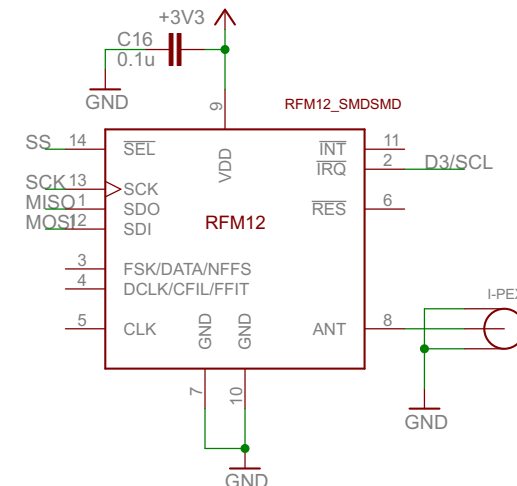
If use 32U4 softserial to communicate with BEE:

- 1) Use softserial I010(TXD) and I09(RXD)
- 2) ms14 GPIO27 set to LOW (default state)

If use ms14 uart to communicate with BEE:

- 1) Disable uart bridge between MS14 and 32u4
- 2) Set MS14 GPIO27 to HIGH.

## RFM12B Footprint



Released under the CC Attribution Share-Alike 3.0 License  
<http://creativecommons.org/licenses/by-sa/3.0/>

Wireless Breadboard

MODEL: M32W.v1.0

2014/4/17 0:11:02

Sheet: 3/3