

1. General description

RPI GSM Adapter is an adapter which accomplished communication by the direct connection between Raspberry Pi GPIO and the GSM/GPRS Module-EFCom Pro. We designed two GPIO interfaces in parallel connection, therefore, **RPI GSM Adapter** can not only connect to Raspberry Pi GPIO, but also connect to the modules compatible with Raspberry Pi GPIO (like our **RPI TFT LCD Adapter**, **RPI BRD Adapter**). In addition, for the circuit, we use the strong DC_DC external power supply, plus a toggle switch, so you can either choose the raspberry pie internal power supply, or select an external one.

Note: When RPI BRD Adapter connected with Raspberry Pi GPIO, please make sure their pins are corresponding with each other.

2. Features

- Compatible with GSM/GPRS Module-EFCom Pro
- Switchable and strong external power supply
- Unique design, more convenient for connection
- Dimension: 46.2mmx35.1mm

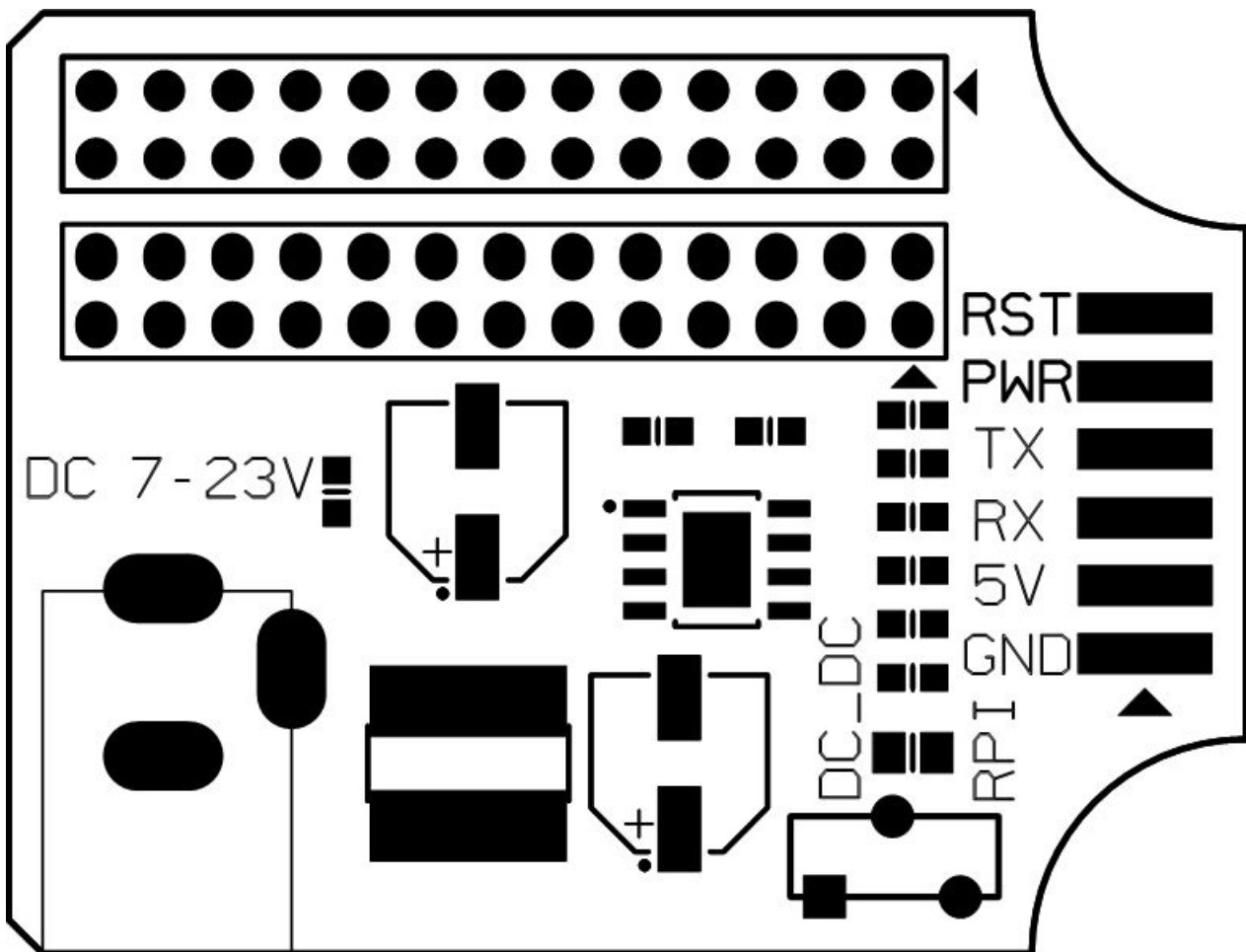
3. Applications

- Communicate with GSM/GPRS Module-EFCom Pro
- Connect with modules compatible with Raspberry Pi GPIO

4. Electronic characteristics

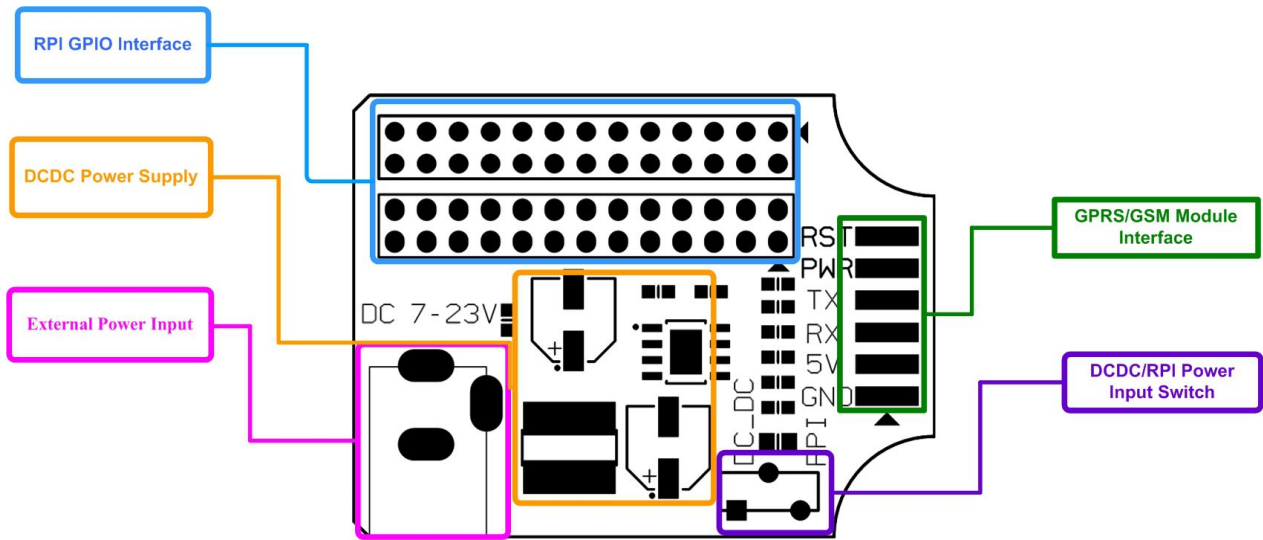
PARAMETER	MIN	TYP	MAX	UNIT
RPI Supply Voltage	-	5	-	V
External power supply Current (RPI)	7	700	23	V
External Input Current		1		A

5. Pining information

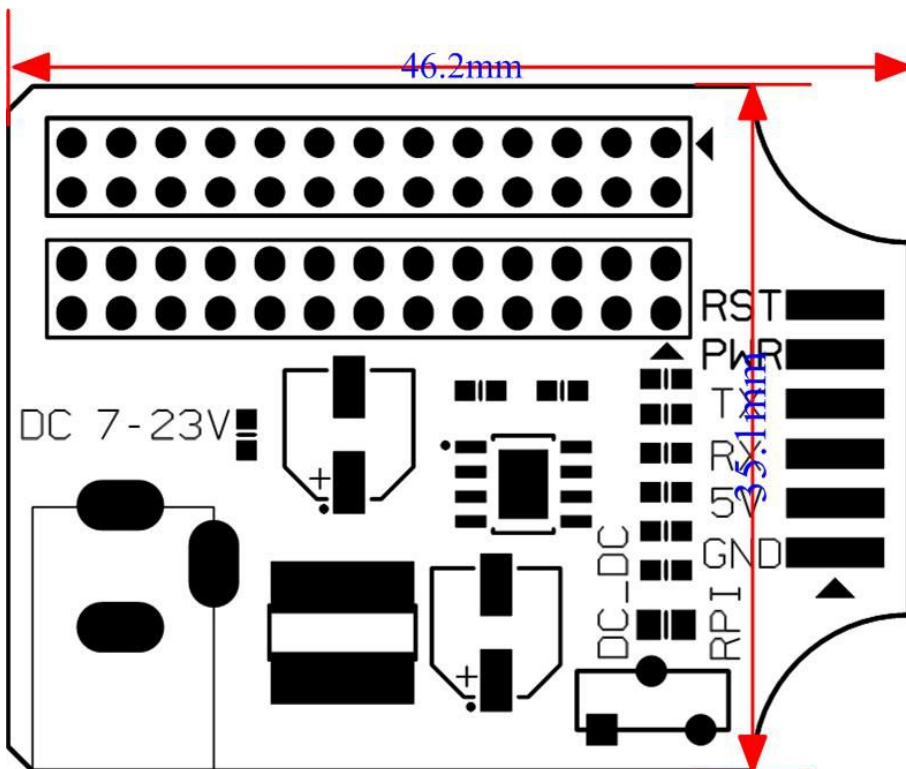


Types	Symbol	Description
	3V3	POWER Supply 3V3
	5V	POWER Supply 5V
	SDA	Raspberry PI IIC SDA Interface
	DNC	DON'T Connect
	SCL	Raspberry PI IIC SCL Interface
	GND	GND
	GPIO7	Raspberry PI Common Interface
	TX	Connect TO GSM Module RX
	DNC	DON'T Connect
RPI GPIO PIN	RX	Connect TO GSM Module TX
	GPIO0	Connect TO GSM Module PWR
	GPIO1	Connect TO GSM Module RST
	GPIO2	Raspberry PI Common Interface
	DNC	DON'T Connect
	GPIO3	Raspberry PI Common Interface
	GPIO4	Raspberry PI Common Interface
	DNC	DON'T Connect
	GPIO5	Raspberry PI Common Interface
	MOSI	Raspberry PI SPI Interface
	DNC	DON'T Connect
	MISO	Raspberry PI SPI Interface
	GPIO6	Raspberry PI Common Interface
	SCLK	Raspberry PI SPI Interface
	CE0	Raspberry PI SPI Interface
	DNC	DON'T Connect
	CE1	Raspberry PI SPI Interface

6. Interface description



7. Dimension outline



8. Revision history

REVISION	DESCRIPTION	RELEASE DATE
V1.2	Initial version	9/26/2013

9. Contact information

For more information, please visit: <http://www.electfreaks.com>

For sales office addresses, please send an email to: service@electfreaks.com