

## 1. Introduction

The RS232 to TTL converter module is widely used in radio modifications, phone flash, XBOX360 flash, GPS, vehicle detection, DVD flash, hard disk repair set-top box upgrade. It can be used to program STC MCU, NXP MCU, Renesas MCU, STM32 MCU, N+-2EC MCU.

**Please note: RS232 to TTL converter module working voltage of 5V, the power to the module, do not mistake the input voltage!**

## 2. Feature

- Compact size
- Operates up to 250 kbit/s
- Low supply current 300  $\mu$ A typical Pro、mifare Desfire
- Size 31.30mm $\times$ 34.8mm

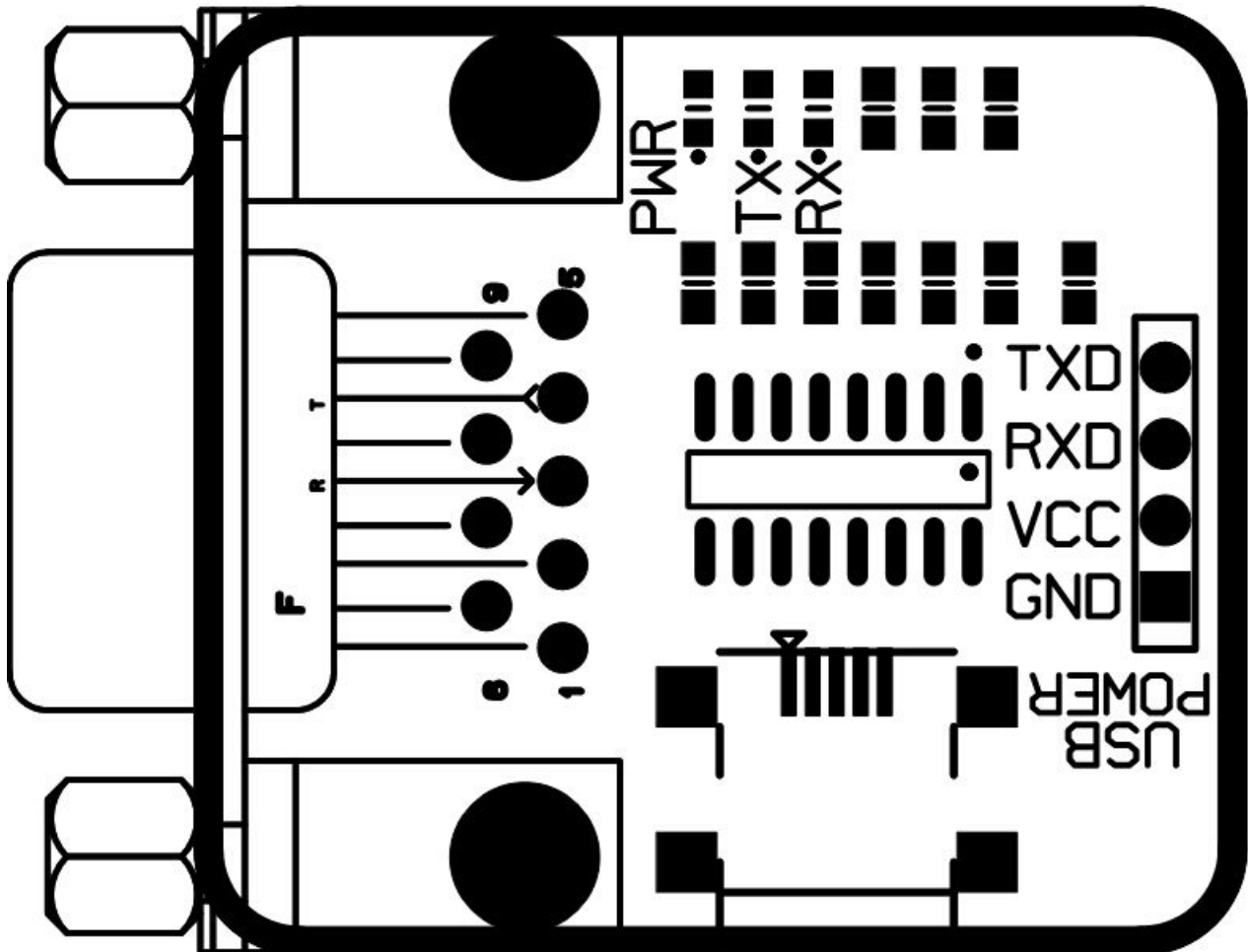
## 3. Specifications

- Operating voltage: 3.3V-5V DC
- Operating current: 6mA
- Power supply: external
- Interface: TXD, RXD, GND, VCC

## 4. Electrical

| PARAMETER            | MIN | TYP   | MAX | UNIT |
|----------------------|-----|-------|-----|------|
| Power Supply Voltage | -   | 5/3.3 | -   | V    |
|                      |     |       |     |      |

## 5. Pin Information



| Type                | Symbol | Explanation            |  |
|---------------------|--------|------------------------|--|
| RS232 MODULE<br>PIN | VCC    | POWER Supply 5V OR 3V3 |  |
|                     | GND    | POWER Ground           |  |
|                     | TX     | Serial Interface       |  |
|                     | RX     | Serial Interface       |  |
|                     |        |                        |  |
|                     |        |                        |  |

**6. Interface Description**

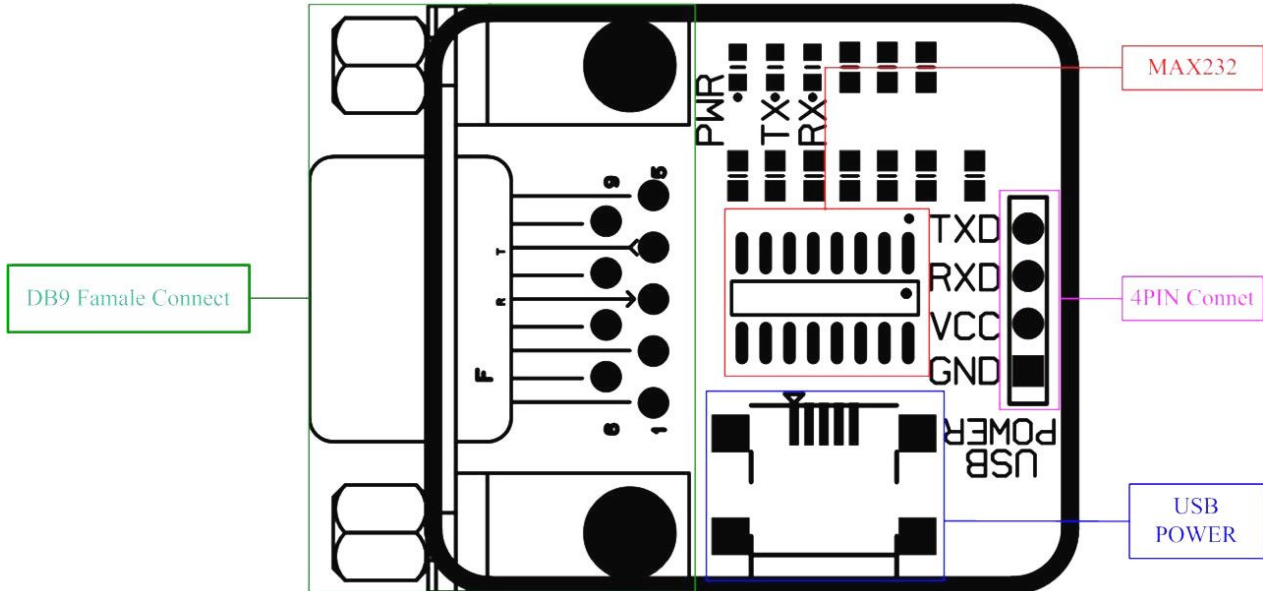


图 2 接口说明

## 7. Dimensions

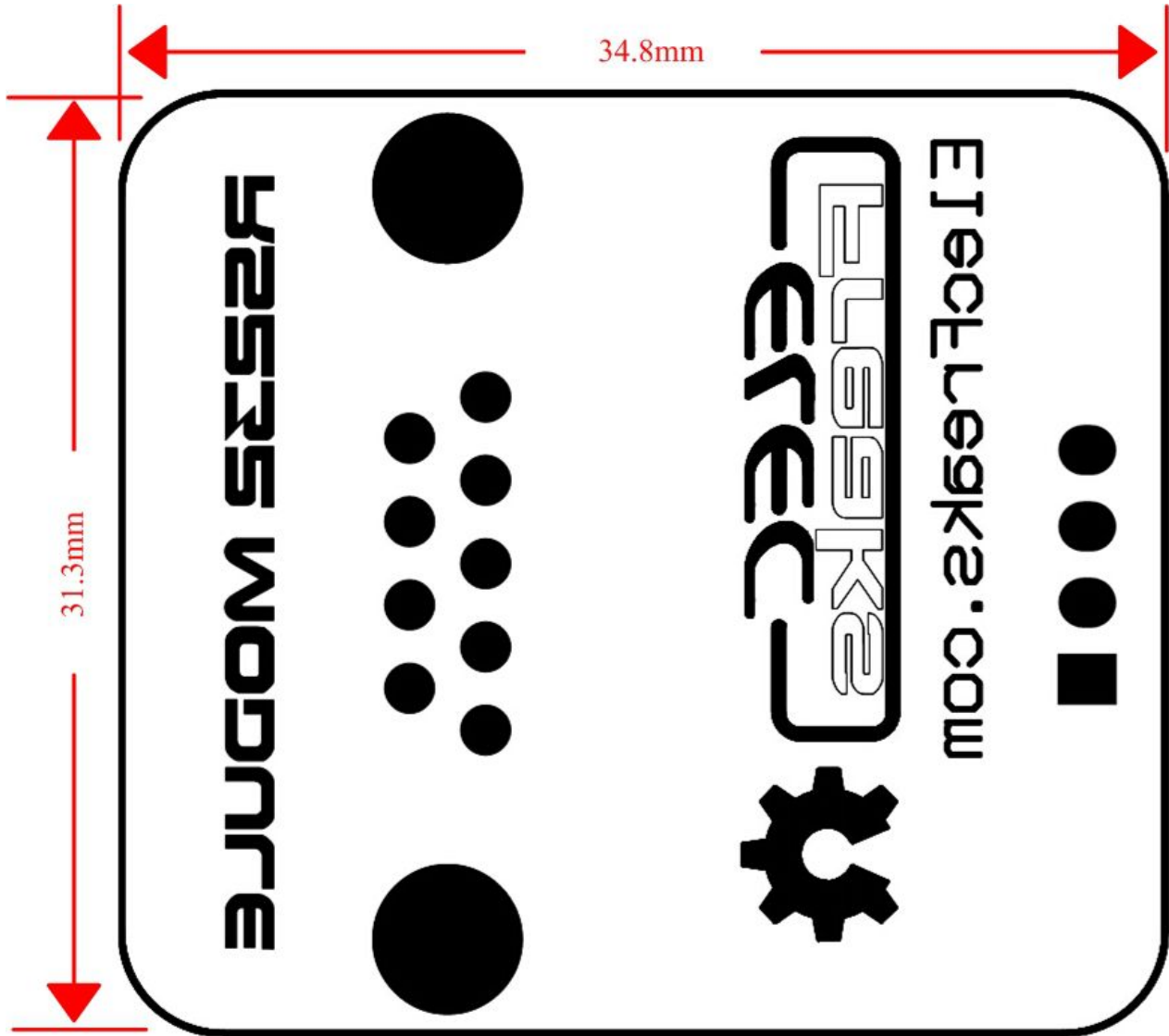


图 3 尺寸

## 8. Revision History

| REVISION | DESCRIPTION     | RELEASE DATE |
|----------|-----------------|--------------|
| V1.0     | Initial version | 20/06/2013   |

## 9. Contact information

---

For more information, please visit: <http://www.electfreaks.com>