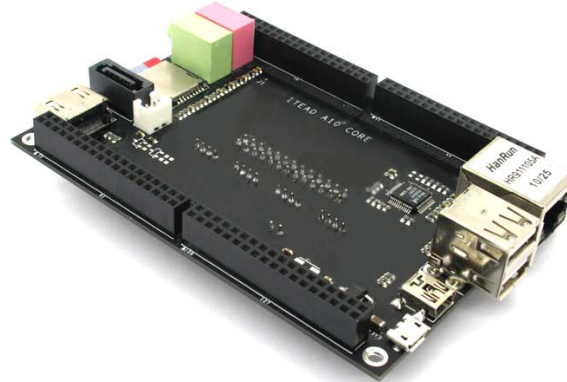




# Iteduino PLUS



## Overview

Iteduino Plus is positioned as an evaluation baseboard for ITEAD A10 CORE, so it breaks out the dedicated interfaces (HDMI, Micro-SD, USB, SATA, Ethernet RJ45 and audio input / output) on the core board module as well as some GPIO interfaces. First, it provides a 2x13 2.54mm pitched bus interface, which includes general GPIO, SPI, IIC and power pins compatible with Raspberry Pi connection cable and various Raspberry Pi adaptor boards that we supply, and it can be connected directly to ITEAD NFC module, SIM900 GSM/GPRM modules, etc. Other 4 pins are broken out as 2.0mm grove socket for directly connecting to our electronic brick modules, and the remaining pins are laid out on the edges of boards and broken out as two 2x36 2.54mm pitched pins for users to make secondary development with DuPont wires. Besides, in order to facilitate connecting to the USB-to-TTL cable for debugging, we also reserve UART interfaces so that you can insert FOCA adapter board directly for communication.

Unlike Raspberry Pi and other similar single-board computers, we innovatively design and sell the core board and functional baseboard separately to help customers modularize the complex core board, and customers can design and produce the dedicated baseboard of their own according to their needs to complete their projects. We will continue to offer dedicated baseboards with various functions, and users can choose and replace the core board according to their needs, which can avoid repeated purchasing of the expensive master control.

## Specifications

PCB size	109.22X76.2X1.2mm
Indicator	3V3 /5V
Interface	HDMI/SATA/MICROSD/USB-AX2/MICROUSB/MINIUSB/RJ45/3.5MM sonic socketX2/2*36 2.54mm socketX2



Working voltage	5V DC (6.3VDC MAX)
Working voltage at I/O port	3V3

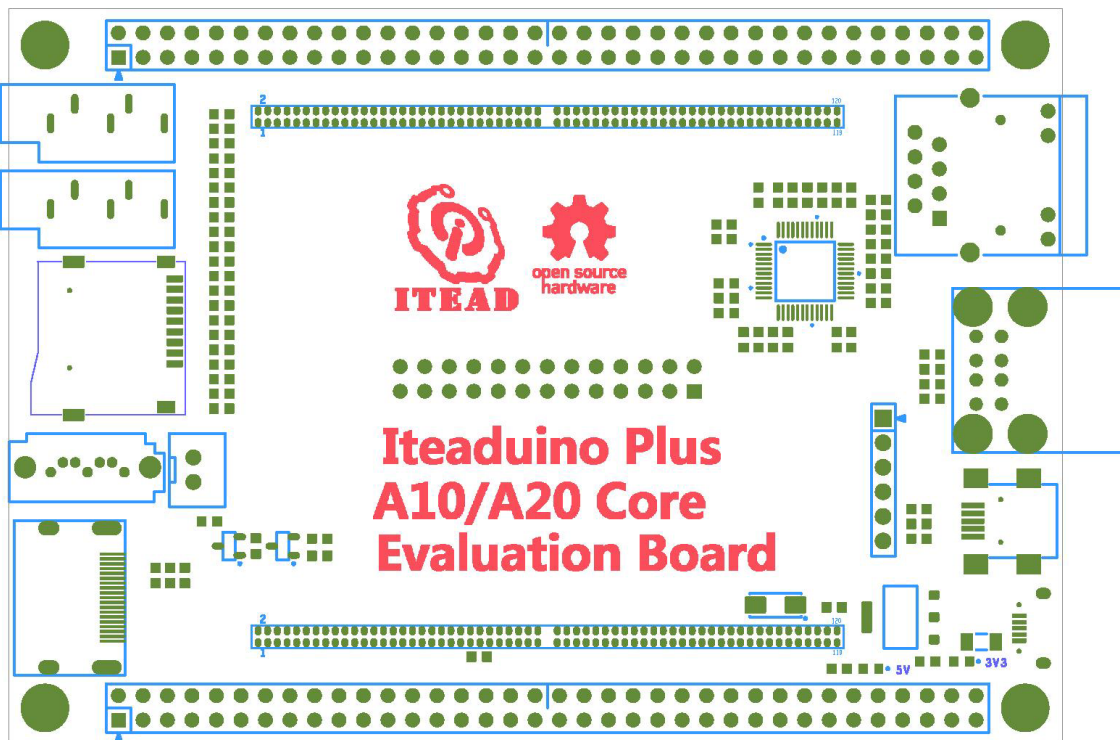
Note:

1, As power supply from USB port of PC can only support the system working properly under low load, an external AC ~ DC power supply is recommended to ensure system working normally under high load.

2, When A10 Core works under large load, voltage loss on USB power cable should be considered, as there might be abnormalities such as program running away due to insufficient input voltage. To ensure a good power supply, we customized a batch of high-quality USB power cable, and the internal resistance is controlled to about 400 ohm. We recommend using the USB power cable supplied by ITEAD to ensure sufficient supply voltage, do not use power cables of poor quality.

## Hardware

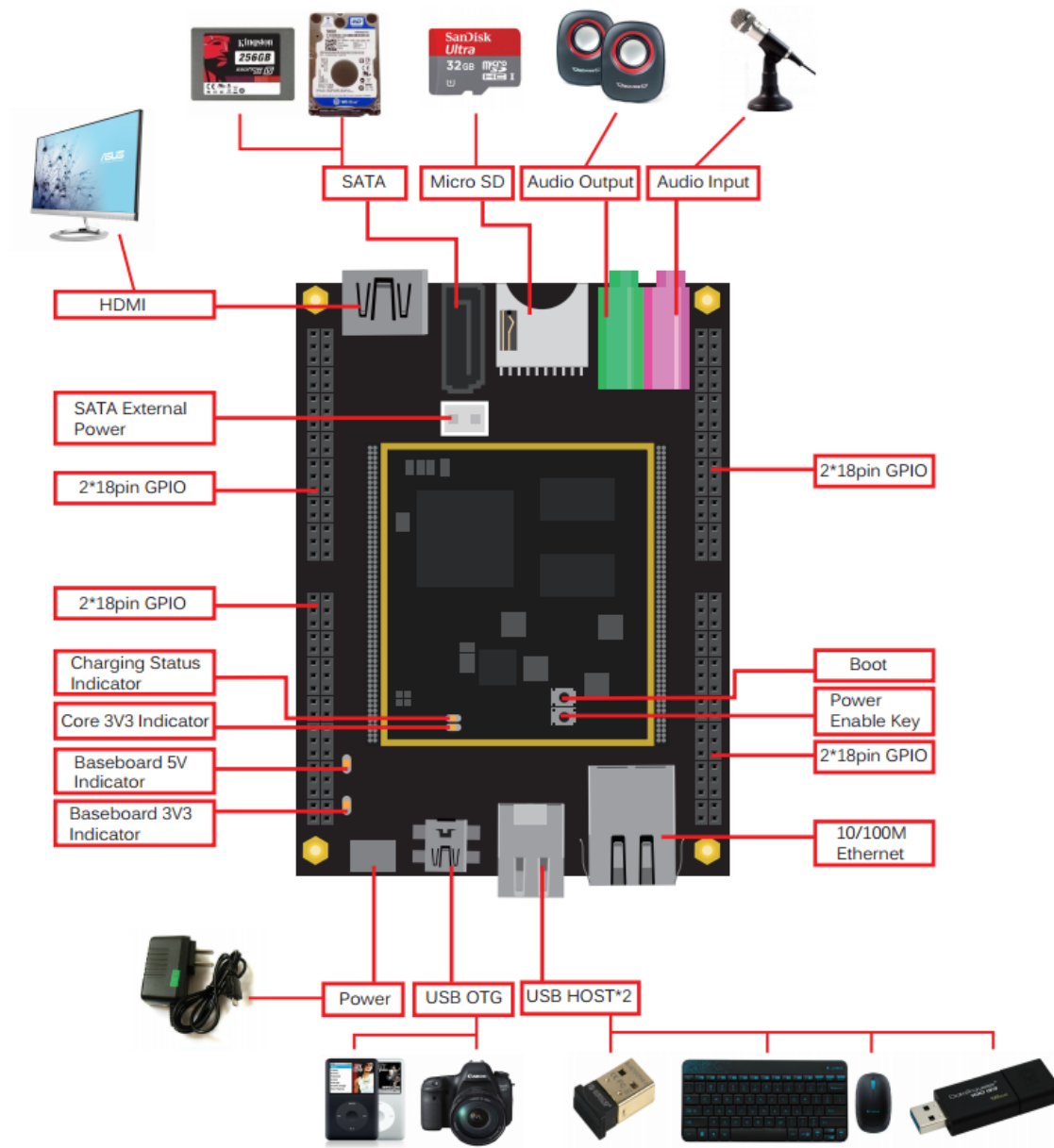
### Appearance

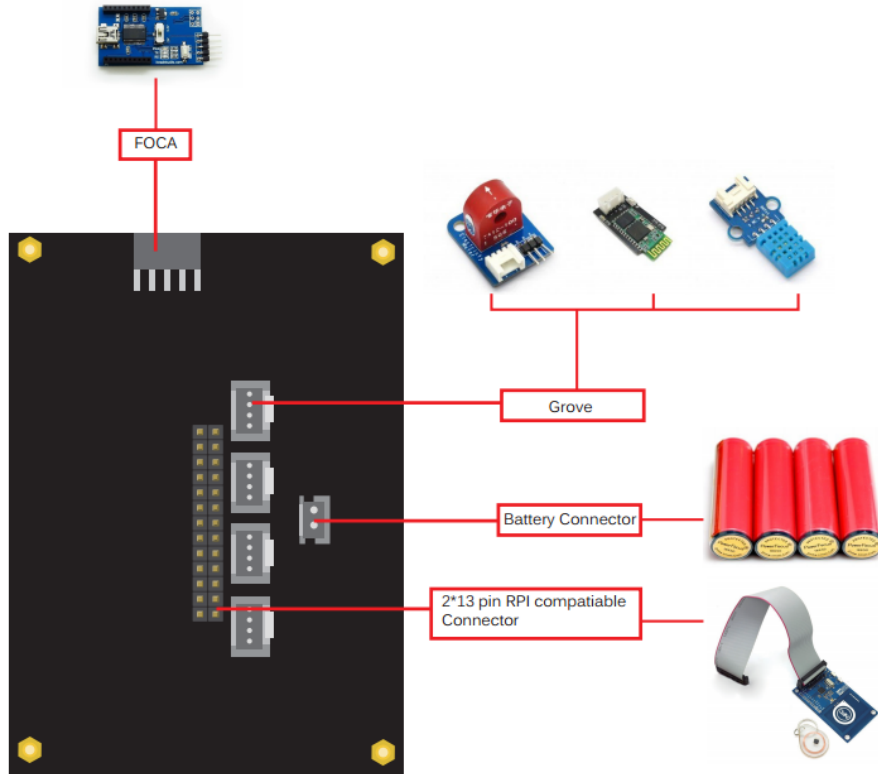


For detailed dimension and specifications, please find in the appendix.

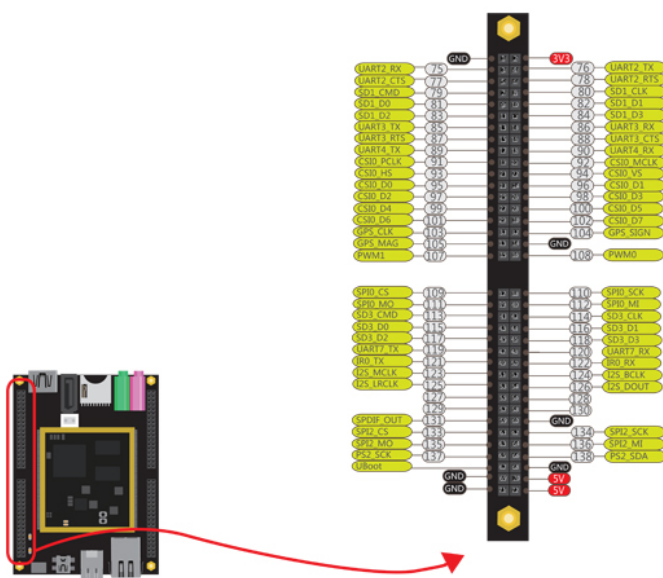


# Interface diagram:



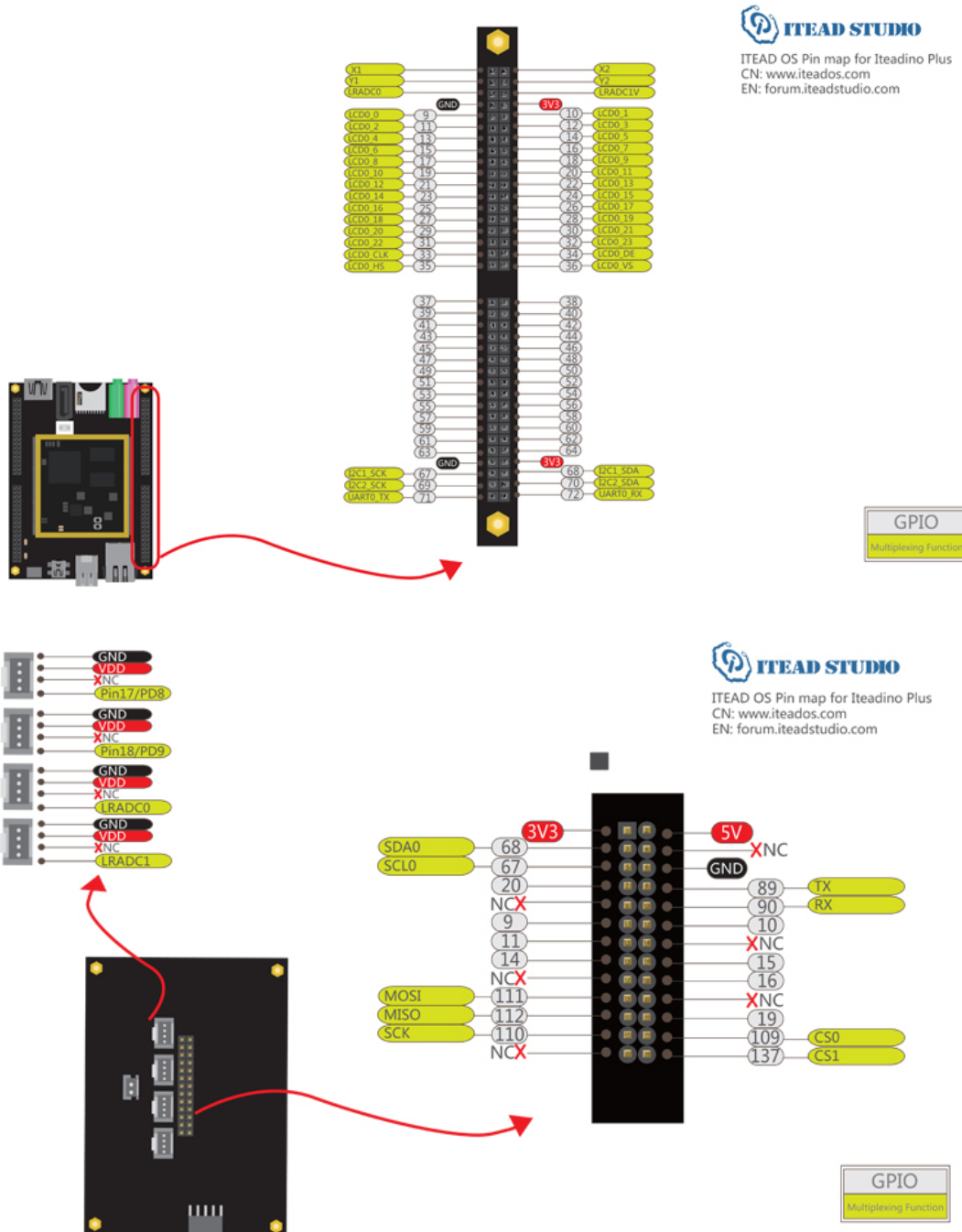


# pinMap



**ITEAD STUDIO**  
ITEAD OS Pin map for Iteadino Plus  
CN: www.iteados.com  
EN: forum.iteadstudio.com

**GPIO**  
Multipurpose function



Download addresses for high-definition vector diagrams: <http://url6.org/ktE>

## Introduction to ITEAD OS

Due to insufficient hardware resources, traditional microcontrollers have small internal data memory capacity, relatively low computing speed and lower communication speed, and they are not competent in many applications, such as using high-speed A/D conversion devices and video image acquisition and processing. A lot of single-board computers are powerful enough to support such applications; however, whose interoperability with external hardware is poor which requires knowledge of the complex linux kernel programming to complete writing of drive.

To facilitate users to use Iteduino PLUS and to achieve creations from a variety of wonderful ideas, thus they will not take Iteduino Plus as an ordinary cheap single-board computer for common applications, such as browsing the web, writing documentation and setting up the server, etc. We do not only break out a large number of interfaces on the board, but also customize a linux distribution - ITEAD OS.

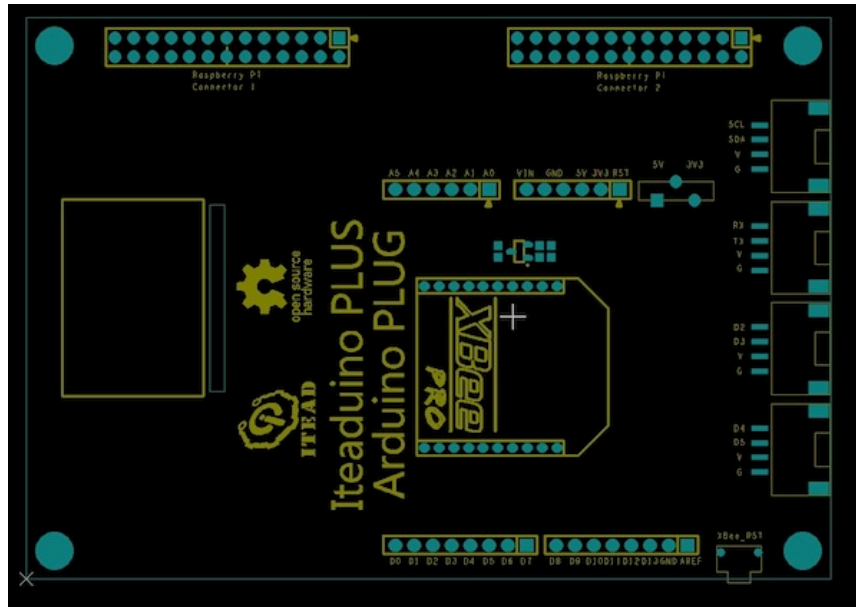
ITEAD OS enables users to easily use Iteduino PLUS as a powerful development board. Each user can write and run a small program to control Iteduino PLUS hardware and to realize a variety of thoughts and ideas that cannot be achieved by simple microcontroller, PC and laptop through the hardware. For example, after data is collected by high-speed A/D, Fourier transformation can be done directly on the system, and then real-time spectrum information can be output on the screen, but this cannot be achieved by microcontrollers; besides, after reading complex ambient temperature value on the PC, one-way relay switch can be controlled to turn on or off the fan according to the temperature. All these features can be easily achieved in Iteduino PLUS.

In ITEAD OS, we provide a number of simple operation functions, so that users can operate I/O port directly to easily send and to receive on UART bus, and even direct operation functions for some common modules will be offered in the future, such as the function which allows users to read temperature directly via DHT11 module. In the  $\beta$  version of ITEAD OS, we have provided a series of operation functions as shown in the list below. With updates of ITEAD OS, we will provide more and more powerful functions.

Function type	Name
Digital I/O	pinMode()
	digitalWrite()
	digitalRead()
8 Bits Advanced I/O	Set8BitsBUS()
	digitalWrite8()
	digitalRead8()
16 Bits Advanced I/O	Set16BitsBUS()
	digitalWrite16()
	digitalRead16()
Time	millis ()
	micros ()
	delay ()
	delayMicroseconds ()
Serial	SerialBegin()
	SerialWrite()
	SerialPrint()
	SerialPrintln()
	SerialRead()
	SerialFlush()
	SerialAvailable()
SerialEnd()	
Analog I/O	analogWrite()

## Related products

We have already customized a shield named Iteduino PLUS Arduino PLUG for Iteduino PLUS. It offers interfaces compatible with Arduino, thus all Arduino-compatible shields can be used on it. Besides, it also provides Grove interfaces which can be connected to a variety of electronic brick modules and a header compatible with 26-pin GPIO interface of Raspberry Pi, so a variety of shields customized for Raspberry Pi can also be used on it.



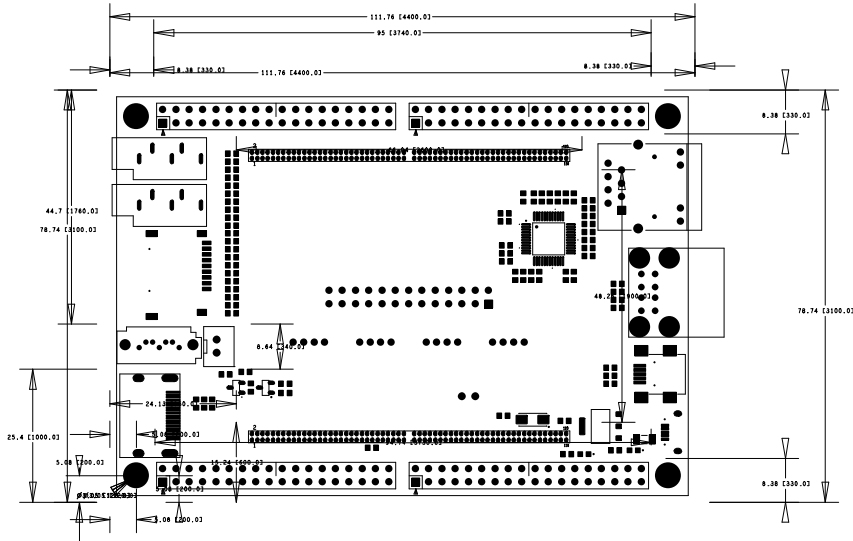
## Links and References

- ITEAD official website: <http://iteadstudio.com>
- ITEAD OS official forum in English: <http://forum.iteadstudio.com/>
- ITEAD OS official forum in Chinese: <http://iteados.com>
- Functions manual in English: <http://url6.org/inW>





# Appendix: Dimension and specifications



unit: mm [mil]





## Revision record

Version	Description	Written by	Date
v1.0	Initial version	Jerry Shi	10 <sup>th</sup> , August, 2013
V1.1	Revision of dimension and pinmap	Jerry Shi	2 <sup>nd</sup> , September, 2013